

TEIS Pathway



TEIS Referral
Children from birth to age 3 are referred to TEIS

TEIS Eligibility Determination



TEIS Services
Child receives TEIS services through IFSP (Individualized Family Service Plan)

TEIS Eligible

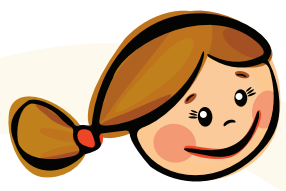
Transition Planning
Transition Planning occurs up to 9 months prior to 3rd birthday.

School District Special Education Eligibility Determination
School district determines eligibility for special education services by age 3.

Not Eligible

Referral to Community Resources

Eligible



Parent Choice

Continue Services through TEIS Extended Option
Child continues to receive services through the TEIS Extended Option up to the start of school following their 5th birthday

School District Special Education Services
Child receives LEA Part B services through an IEP (Individualized Education Program)

Decline / Exit Services

